

**VALBOL**

Válvulas Worcester de Argentina S.A.

Series 44EF / 51EF Fugitive Emission

Rev: 01 | 01-2014 | N°: VW44EF/51EF

High-Performance Valves for Fugitive Emission

Toxic Gas and High Cycle Applications.



VALBOL Series 44EF valve are designed for both cycle-life and leak tightness of ball valves. Available in flanged body or 3 piece styles, they offer a unique combination of features as Dual Stem Seals - primary seal and filler ring seal against the stem and body. Special style packing rings, loaded by the gland plate, for the secondary seal. Double "Live-loaded" Stem Seals - . They are further loaded by the gland plate that is under constant force from the stacked Belleville washers. Two Stem Purge Bosses, The Series 44EF comes with 2 bosses in the stem area. One is drilled & tapped to 3/8" NPT standard threads. An optional second port can be added to allow through purging between the stem seals or connection of instrumentation and sensing devices. The valve goes from full open to full closed with 90° operation of the stem. Dual stem seals ensure zero leakage. The bonnet and body are cast as a single piece. There are no welds, crevices or static seals to fracture and leak. The Series 94 is available with stainless steel or other anti-corrosion trims to meet NACE MRO 1-75.

Applications

Leak-off systems with sensing devices & alarms for fugitive emissions.

Applications requiring extremely high cycle life.

Chlorine applications requiring a high performance stem seal design.

Superheated water (400 °F & 400 psi).

High temperature applications and/or high pressure drops requiring metal seated versions.

High temperatures above 500 °F requiring a Grafoil stem packing.

Phosgene gas and other highly toxic media requiring zero leakage.

Steam:

High cycle steam valves are subject to wide thermal swings.

Polymer Lines:

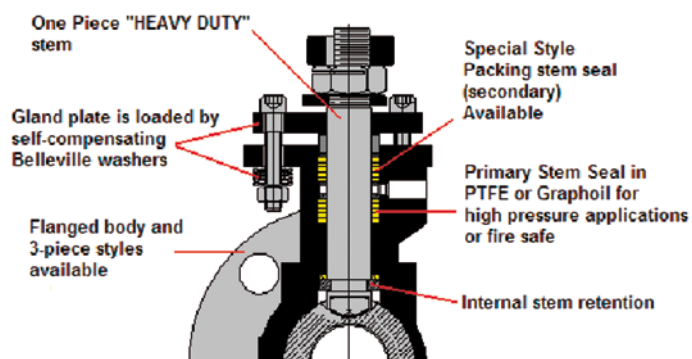
The Series 44EF valve, using FEP or PFA seats and seals, is a technical improvement designed for use in polymer lines.

Cryogenics:

A bonnet extension on the Series 44EF valve provides the thermal conductivity to maintain ambient temperatures on the stem seals.

Features

- Gland plate is loaded by self-compensating Belleville washers.
- Extra heavy stem design.
- Grafoil® stem packings available for high temperature and fire-safe applications.
- Special style packing stem seal (secondary) Available
- Primary stem seal.
- Flanged body and 3-piece styles available.
- Optional second purge port.
- Dual purge bosses.
- Purge port drilled and tapped to NPT thread specifications.
- Internal stem retention.



Benefits

High vacuum capability (tight shutoff to 1 x 10⁻³ Torr and higher).

Extremely high cycle life (more than 20 times that of a conventional stem seal design.).

For automated versions, the actuator can be removed without affecting the integrity of the valve seals.

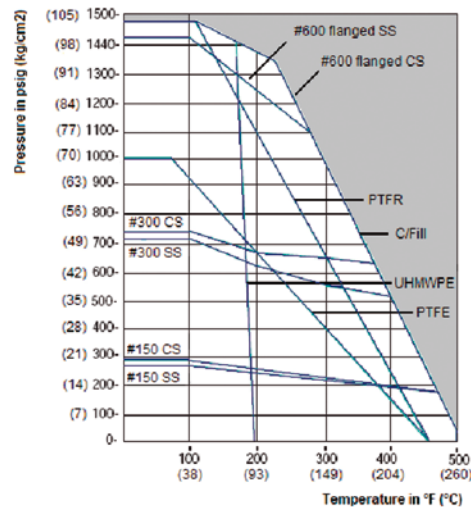
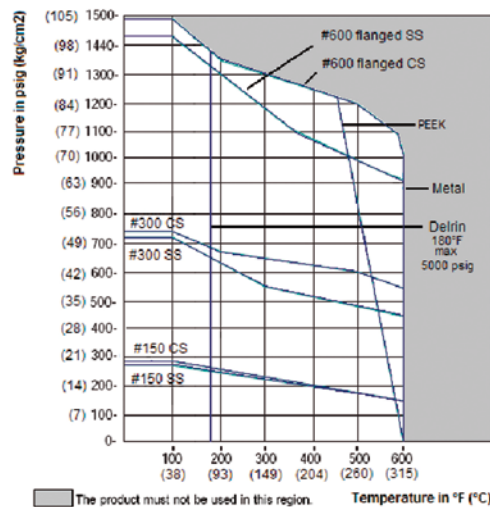
The extended bonnet allows easy stem access after insulation. It also provides thermal isolation of the actuation mechanism. Pneumatic and electric modulating packages with either standard or characterized seats are the only solution in applications where traditional rising stem control valves just cannot be used.

**VALBOL**

Válvulas Worcester de Argentina S.A.

**Series 44EF / 51EF
Fugitive Emission**

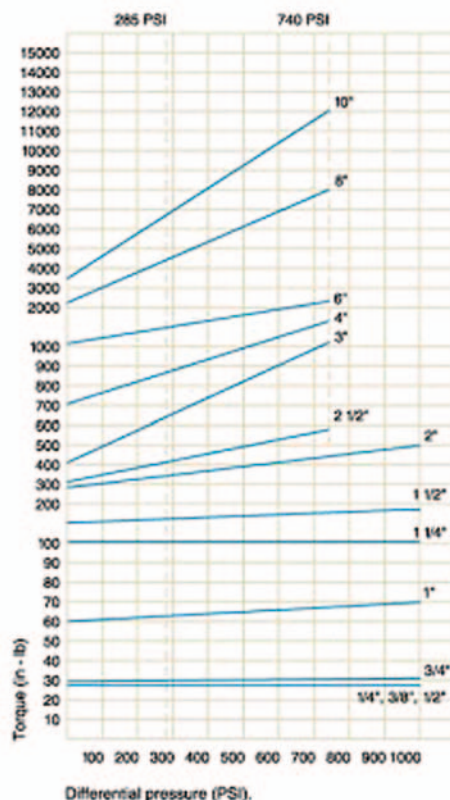
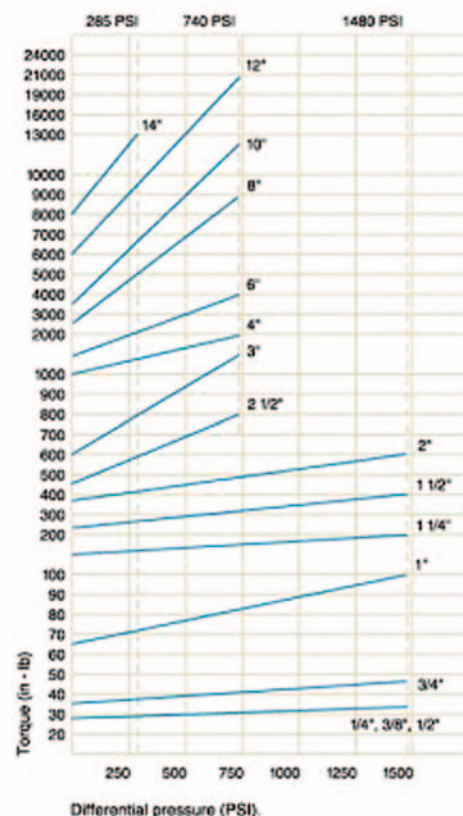
Rev: 01 | 01-2014 | N°: VW44EF/51EF

Pressure / Temperature Rating**Automation**

VALBOL offers a complete line of pneumatic and electric automation packages for Series 82 & 83 valves. Both pneumatic and electric packages are offered for on/off or proportional control. Available options include

Top mounted limit switches - Proximity switches - Single and double acting pneumatic actuators - TYPE 4, 4x, 7 and 9 enclosures - Remote position indication - Positioners. Before an actuator can be sized for any given valve application the operating torque required for the valve must be determined. The operating torque of a ball valve is influenced by a number of factors, some are design and materials related,

others are application and service conditions. Design related factors include the type and material of the valve seats, while application factors include system differential pressure, media and frequency of operation. For complete valve operating torque data refer to the torque curves given for each seat material, and provide the correction factor for media and the type of service such as on-off operation, cycle frequency, etc.

PTFE**RTFE**

**VALBOL**

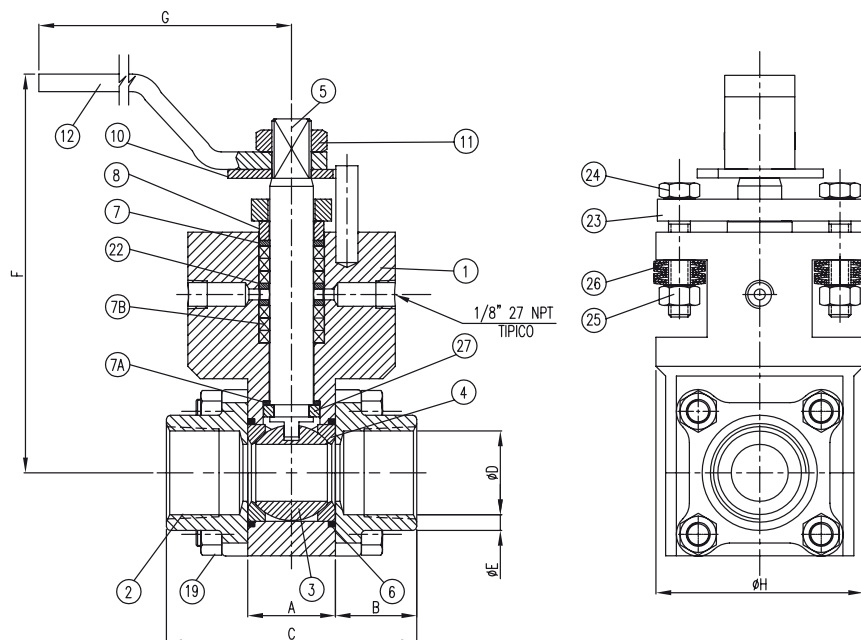
Válvulas Worcester de Argentina S.A.

Series 44EF / 51EF
Fugitive Emission

Rev: 01 | 01-2014 | N°: VW44EF/51EF

Specifications**Series 44EF 3-Piece****Sizes:** 1/4" - 2"**Ends:** Screwed Ends, Socket Weld, Butt Weld**Body Materials:** Stainless steel, carbon steel.**Stem:** 316 S.S, Monel or Hastelloy C.**Stem Seals:** Virgin PTFE, Grafoil, Carbon filled PTFE**Seats:** Metal, Peek, PTFE, C/Fill, RTFE or UHMWPE**Body Seals:** PTFE coated "S" gasket, PTFE, Viton**Ball:** 316 S.S, Monel or Hastelloy C.**Options:** 1 leak-off port drilled & tapped to 3/8" NPT standard. Optional 2nd port for purging.**Operation:** Lever handle, pneumatic or electric automation (on/off or proportional control)

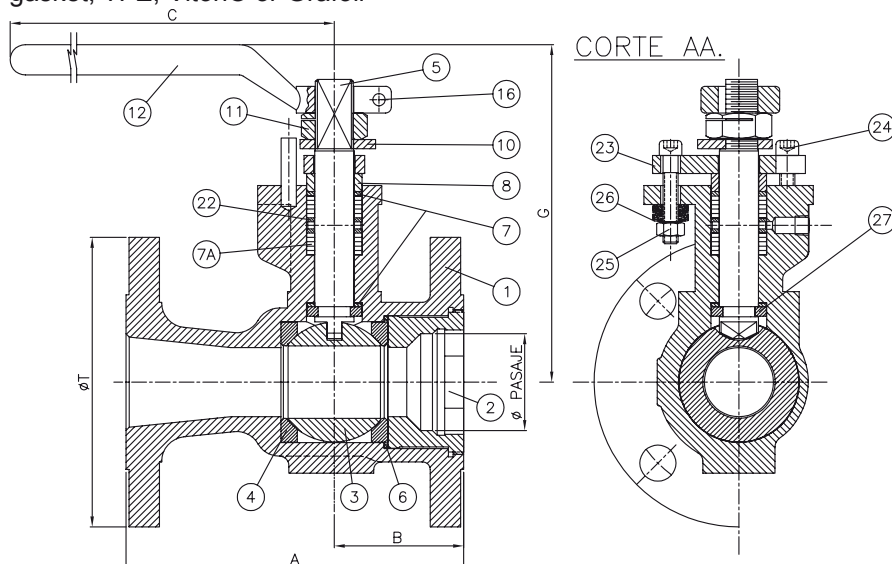
Dimensions for 44EF 3. Piece (mm.)



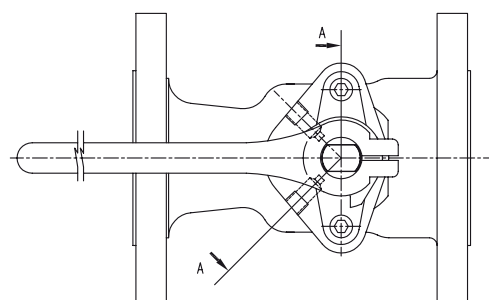
Valv.	A	B	C	D	E	F	G	H
1/4"		18.28	68.3	11.44	5.8			
3/8"		18.28	68.3	14.95	4.1			
1/2"	31.7	22.35	76.4	18.63	2.0	164.0	165.0	75.0
3/4"		23.11	78.0	24.11	3.34			
1"		31.43	94.5	30.29	3.65			

Series 51EF Flanged**Sizes:** 2", 3", 4" & 6"**Flanges:** Per ANSI 150# or ANSI 300# raised face**Body Materials:** Stainless steel, carbon steel**Stem:** 316 S.S, Monel or Hastelloy C**Stem Seals:** Virgin PTFE, Grafoil, Carbon filled PTFE**Seats:** Metal, Peek, PTFE, C/Fill, PTFE or UHMWPE**Body Seals:** PTFE or graphite coated stainless steel "S" gasket, TFE, Viton® or Grafoil**Ball:** 316 S.S, Monel or Hastelloy C**Options:** 1 leak-off port drilled & tapped to 3/8" NPT standard. Optional 2nd port for purging.**Operation:** Lever handle, pneumatic or electric automation (on/off or proportional control)

Dimensions for 51EF Flanged (mm.)



Valv.	Pasaje	A	B	C	G	T
2"	36.5	177.8	68.0	260.0	178.0	152.4
3"	63.5	203.2	92.3	465.0	166.0	190.5
4"	82.5	228.6	101.8	465.0	180.0	228.6
6"	111.0	266.7	108.1	541.0	251.0	266.7



Válvulas Worcester de Argentina S.A. | Valbol

Osvaldo Cruz 3333 (C1293ADL) C.A.B.A. - Argentina | Tel.: (5411) 5533-5200 / Fax.: (5411) 5533-5290 / E-mail: mail@valbol.com.ar / www.valbol.com.ar

The company reserves the right to change any of the features or measures of the products without notice.