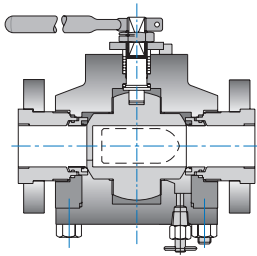




Catalogue on request
Solicite folleto específico

| Request our custom product department for other special applications.
| Consulte con nuestro Departamento de Ingeniería para aplicaciones especiales.

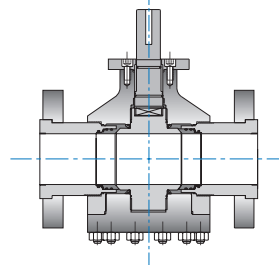


Pig Valve

Pig launchers and receivers
Trunnion ball.
150 to 900 ASME series.
Diameters from 2" to 10".
No tools required to operate.

Válvula PIG

Lanzadora y receptora
de pigs/scrapers.
Esfera guiada integral.
Series ASME 150 a 900.
Diámetros desde 2" hasta 10".
Operable sin herramientas.

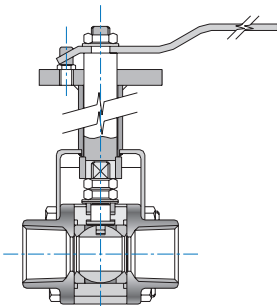


Cut Valve

ALL METAL METAL, SEATS
full bore ball valve
WE RF, RTJ.
300 to 1500 ASME Series.
Diameters from 2" to 6"
Enhanced recovery.

Válvula CUT

Asiento METAL/METAL,
paso total. WE RF, RTJ.
Series ASME 300 a 1500.
Diámetros desde 2" hasta 6".
Recuperación secundaria.

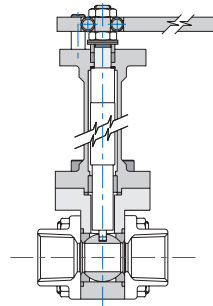


Extended Stem

For insulated piping
screwed, socket ends
Flanged ASME 150 & 300
Diameters from 1/4" to 10".

Vástago Prolongado

para Instalaciones con
Aislación Térmica.
Extremos Roscados SW- BW
Bridados ASME 150 - 300.
Diámetros desde 1/4" hasta 10".

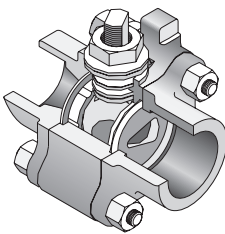


Cryogenic Service (- 325°F)

Screwed, socket ends.
Flanged ASME 150 & 300.
Diameters from 1/2" to 8".

Criogénica (- 198°C)

Extremos Roscados SW.
Bridados ASME 150 - 300.
Diámetros desde 1/2" hasta 8".

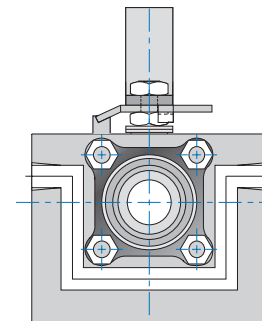


Metal Seats

w/ round port metal seats
or characterized "V" port
metal seats.
Screwed, socket ends.
Flanged ASME 150 & 300.
Diameters from 1/4" to 6".

Asientos Metálicos y Asientos Metálicos Caracterizados (VPV)

Extremos Roscados, SW- BW.
Bridados ASME 150 - 300.
Diámetros desde 1/4" hasta 6".

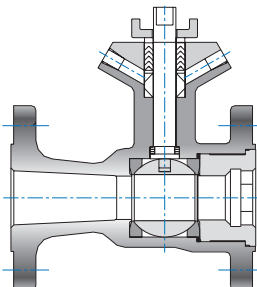


Jacketed Valves

Screwed, socket ends.
Flanged ASME 150 & 300.
Diameters from 1/4" to 6".

Calefaccionada

Extremos Roscados SW.
Bridados ASME 150 - 300.
Diámetros desde 1/4" hasta 6".

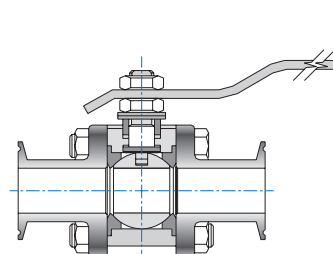


Fugitive Emission

Special stem protection
for fugitive emission.
Flanged ASME 150 & 300.
Diameters from 1/4" to 12".

Emisiones Fugitivas

Protección especial de vástago
para emisiones fugitivas.
Bridados ASME 150 - 300
Diámetros desde 1/4" hasta 12".

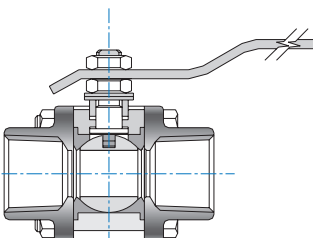


Sanitary Valves

Screwed, socket
and clamp ends.
Diameters from 1/4" to 2".

Válvulas Sanitarias

Extremos Roscados SW- BW
Clamp.
Diámetros desde 1/4" hasta 2".

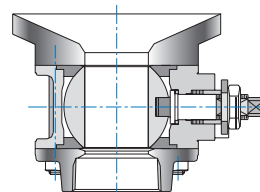


Cavity Filled

Screwed, socket ends
Flanged ASME 150 & 300
Diameters from 1/2" to 8".

Cavity Filled

Extremos roscados
SW - BW de 1/4" a 2"
Bridados ASME 150 - 300
Diámetros desde 1/2" hasta 8".



Flush Tank Bottom Valve

Diameters from 1/2" to 12".

Fondo de Tanque

Diámetros desde 1/2" hasta 12".